

~ NEWS & LETTERS RECEIVED ~

Needed - Members to form a committee to prepare for the First Annual Meeting. Please contact Judie Siddall.

Needed - Members to form a committee to handle the nomination and election of permanent officers at the First Annual Meeting in 2000. Please contact Judie Siddall.

"So glad to see the T. C. C. is coming along. Like to see a few more members. Have been passing out a few pamphlets to people I think might be interested...." Chet Creutzburg & David Martin

"A word of encouragement for the establishment of TCC, which I joined within days of receiving notice of formation. Staying connected to the British Friends of Blue organization was a hassle with the need to send their dues in Pounds Sterling. Eventually, I let my membership lapse, although I miss the information they provided through the newsletter. Seeing TCC start is an encouraging development...." C F Brydon

"Am glad to see that your new organisation is now up and running. On behalf of **Friends of Blue** may I wish fraternal good wishes and hopes for collaboration in the future. I enclose my application for membership" C. Murray Parkes (Chairman of the Friends of Blue)

Temporary Officers and Their Duties



Judie Siddall
734 Torrey Ct
Palo Alto, CA 94303
650-494-7920
email: merlinbl@pacbell.net
Vice-President
Secretary
Committees

David Arman
P O Box 39
Portsmouth, RI 02871
401-841-8403
email: info@oaklandpublications.com
President
Editor-Bulletin
Website Operator

Norman Wolfe
PMB 541
1500A East College Way
Mt Vernon, WA 98273
360-336-5835
email: floboo@pacificrim.net
Treasurer
Membership

~ ARTICLES ~

Background: In 1998, The China & Glass Quarterly featured a two-part article that was an attempt to fully list and illustrate the popular Grapevine Border Series by Enoch Wood and Sons.

GRAPEVINE BORDER SERIES UPDATE

by
Norman Wolfe

I would like to thank John Storton, a fellow collector of the Grapevine border series. Much of this information came from him as a result of last year's effort to catalog the entire Grapevine border series in the short lived CHINA AND GLASS QUARTERLY. If you do not have this set of 4 issues ask our President, Dave Arman, he may have a few copies still for sale.

WGB 4 - BELSAY CASTLE, NORTHUMERLAND

9 1/2" L platter,
previously unrec-
orded view

**WGB 14 - CLAREMONT, SURREY**

10 1/2" D plate, I have
included the source
print. This view is still
unrecorded.

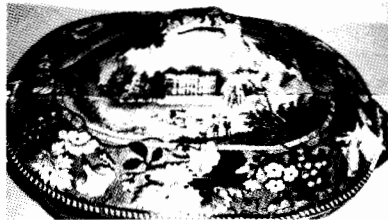
**WGB
18-DALGUISE,
PERTSHIRE**

10" D plate, if you look at the plate and the source print you notice that the building is wrong. It is actually **SHERBOURN CASTLE**. The rest of the view is from **DALGUISE, PERTSHIRE** though. (cont. next page)





WGB 25 - GNOLL CASTLE GLAMORGANSHIRE



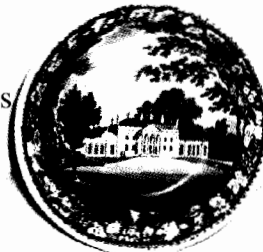
Soup Tureen Lid (twisted vine handles), here is a better photo of this view. Appears with LUMLEY CASTLE, DURHAM.

WGB 26 - GOODRIDGE CASTLE, HEREFORDSHIRE

Previously recorded as GOODRIDGE CASTLE, *KENT*. Available prints of this Castle do not match this view in any manner!

WGB 36 - HYLANDS, ESSEX

7 1/2" beaded rim bowl, rare size, previously unrecorded view for this piece.



WGB 37 - KENILWORTH CASTLE, WARWICKSHIRE



This view was previously known as Unidentified view #5, It is known on a 5 1/2" plate and 4 3/4" cup plate.

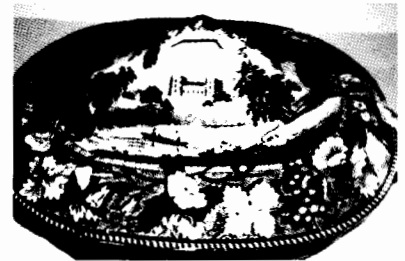
WGB 37a - KIRKSTALL ABBEY, YORKSHIRE

This is the view previously known as Ross Castle, Monmouthshire. Both views are marked Ross Castle and that is where the confusion has been.



WGB 39a - LISMORE CASTLE, WATERFORD

12" platter illustrated in "True Blue", p 103.



WGB 39b - LUMLEY CASTLE, DURHAM

Soup Tureen Lid (twisted vine handles), previously unidentified view. Appears with GNOLL CASTLE, GLAMORGANSHIRE.



WGB 43 - ORELTON, PEMBROOKSHIRE

Here is the source print for this rare view. If you have the water cistern or bidet with this view,

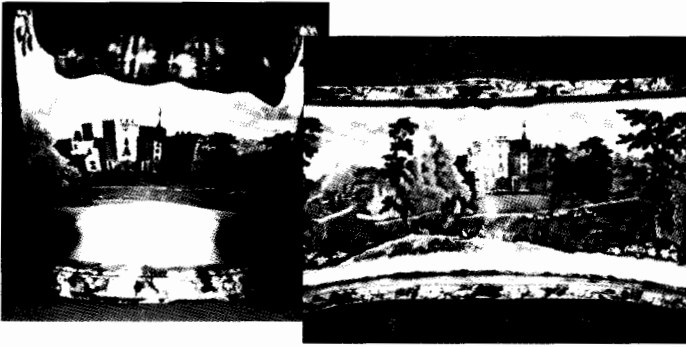
please send us a photo for our records.

WGB 44 - POWDERHAM CASTLE, DEVONSHIRE

20" L, 8" H. This rare piece is a cheese cradle or coaster as the English call it. Powderham Castle is on the interior and on both ends.



This view is also known on a large pitcher.



WGB 46A - RIVEN HALL PLACE ESSEX

The source print for this view comes from "EXCURSIONS IN ESSEX, VOL. 1". This view pops up quite often in this series. It was previously recorded as WGB 68 - Unidentified view #3, exterior of an open vegetable dish. Also known as WGB 69 - Unidentified view #4, exterior of scroll footed sauce tureen, also recently found on the exterior of a covered vegetable dish and the exterior of a beaded rim bowl.



WGB 48 - THE ROOKERY, SURREY

Here is the source print for this view. If you have either the 7 3/4" D plate or 6 1/2" D bowl with this view, please send us a photo for our records.



WGB 49 - ROSS CASTLE, MONMOUTHSHIRE

6 1/2" D plate, previously unrecorded view. The actual existence of **Ross Castle** cannot be proved. Well, here it is folks!

WGB 52 - SHERBOURN CASTLE, OXFORDSHIRE

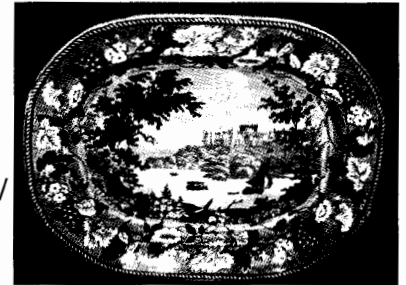
Sauce tureen exterior (leaf handles), this view has always been called **Sharon Castle, Yorkshire** (WGB 51). Another error corrected. This does however place doubt on the existence of Sharon Castle as a view in this series.



Sherbourn Castle is also illustrated on the dinner plate known as **Dalguise, Perthshire** listed previously (WGB 18).

WGB 64 - WINDSOR CASTLE

Previously unrecorded view here seen on an 18 1/2" L platter. Source print is unknown.



The Cities Series and The Don Quixote Series by DAVENPORT - Revisited

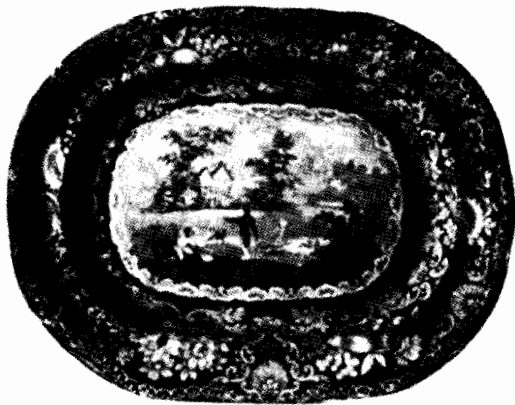
by **David Arman**

Several years ago, I wrote an article which was published in the MAINE ANTIQUE DIGEST and the FRIENDS OF BLUE BULLETIN concerning the discovery of different transfers that re-attributed these two series to the Davenport pottery. Recently, we were cleaning out our files and found even more evidence pointing toward this re-attribution, which we would like to share with the T.C.C. membership.

First, let's discuss the attribution of the *DonQuixote* series to Clews. Have you ever seen a piece from this series actually marked Clews? I have NO record, in thirty years of specialization, of a marked piece. It seems that Barber, in his 1899 book, Anglo-American Pottery, made the assumption that the three Literary series were by the same maker, Clews, who had profusely marked two of the three series, but had somehow omitted marking the Quixote series. As most of you might know, the Clews Pottery was one of the few manufacturers



2



that marked practically their entire output. To have omitted a complete series, seems somewhat improbable.

It wasn't until 1954, that specialist dealers Richard and Virginia Wood of Baltimore published that unique 12 5/8" d bowl illustrated in figure #1. In the center, surrounded by the familiar "star" border of the *Don Quixote series* is the central scene and border of the 9" d plate with a view of Quebec from the *Cities series*. The Woods, relying on the Barber attribution of *Don Quixote* to Clews, therefore made the assumption that the *Cities series* was manufactured by the same pottery.

In the mid-1970's, we authored an article concerning Importer's Marks published in the *Maine Antique Digest*, which illustrated a 14 3/4" w platter from the *Franklin's Morals series* marked Davenport and having an underglaze blue transfer of a Hill and Henderson - New Orleans Importer's mark (figures 2 and 3). Also, in that same article we published a *Bride of Lamermoor* platter with a Davenport title and underglaze mark, plus another Henderson (& Gaines) Importer's mark (figures 8 and 9). That's where the matter stood, until twenty years later, when we were disbursing the massive collection of Paul and Gladys Richards.

In the early 1990's, a 9" d plate from the *Don Quixote series* was discovered, which had an ornate Hill and

4



3



6



Henderson Importers mark (figures 4 and 5). This provided a tenuous link between the *Don Quixote series* and the Davenport pottery. However, the discovery of a soup tureen base in the Richards' Collection had the rare Louisville (KY) transfer on the exterior and the *Franklin Morals* border around the interior (figures 6 and 7). This tureen was unmarked, except for the identical Importers mark (figure 3) that we had discovered twenty years earlier on the *Franklin Morals* platter. This removed any doubt, on our part, that Davenport probably was the potter who manufactured these three series,

since there were double links between the *Don Quixote series* and the



8

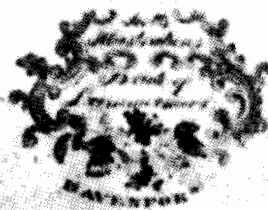
Cities Series to the *Franklin Morals series*, which was often marked by the Davenport firm.

However, that's not the end of the story, since I recently discovered still another link, in the form of a second Louisville Soup Tureen from the *Cities series*, on page 176 of *THE OLD CHINA MAGAZINE* from June, 1903 (figure 10). The cover was decorated with an overall Floral and Shell pattern, not the border usually found on this series. As you can see, when comparing the transfer of the cover to the border of the *Franklin Morals* platter, there is a perfect match.



9

5



Namely the workman in the pottery that made the *Franklin Morals* platter, used the border from that series, when applying the transfer to the cover of the *Cities* soup tureen. Interestingly, the caption of the 1903 photo read, "No 3. Soup Tureen by Davenport.....View unmarked and unidentified".



Now we have linked the *Don Quixote* series to *The Cities series* with the rare bowl (figure #1) and the Hill and Henderson - New Orleans Importer's marks (figures 3 and 5). Also, we have linked the *Don Quixote* series to the Henderson (in partnership with others) ceramics importing firm in New Orleans to Davenport through the *Bride of Lammermoor* platter. We have also observed that the only port of entry associated with the Davenport firm was New Orleans and that all the importers marks found on the *Cities* series lie along the Mississippi and Ohio Rivers, which are reached through the Port of New Orleans. Finally, we have linked the *Cities series* to the *Franklin Morals* series through the inter-series use of borders on the two Louisville soup tureens (figures 6 and 10). In our opinion, the case for the *Don Quixote* and *Cities Series* being attributed to Davenport is more than circumstantial and should be considered a fact.

A SPECIAL THANK YOU!

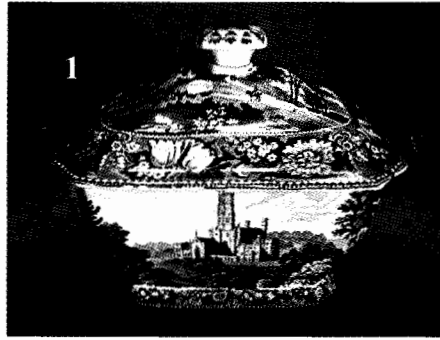
MOST OF OUR MEMBERS' FIRST CONTACT WITH THE TCC WAS THROUGH OUR BROCHURE. WE HAVE LINDA AND BOB HEWITT OF ATLANTA, GEORGIA TO THANK FOR THE SUPERB LOGO, BEAUTIFUL PICTURES, AND CREATIVE FORMAT OF OUR BROCHURE.

LINDA AND BOB ARE THE OWNERS OF HEWITT AND HEWITT, A FULL SERVICE PUBLIC RELATIONS FIRM WHICH THEY FOUNDED 15 YEARS AGO. HEWITT AND HEWITT SPECIALIZES IN BUSINESS COMMUNICATIONS, PARTICULARLY TELECOMMUNICATIONS, AND GRAPHIC DESIGN.

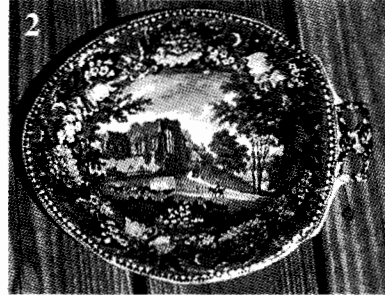
BOTH BOB AND LINDA ARE LOVERS OF TRANSFERWARE, WHICH THEY HAVE COLLECTED FOR MANY YEARS. THEY PARTICULARLY LOVE ARCHITECTURAL THEMES IN THEIR COLLECTING.

BOB AND LINDA CAN BE CONTACTED AT HEWITT AND HEWITT, MIDTOWN PLAZA 2, 349 PEACHTREE ST, SUITE 1420, ATLANTA, GA 30309 (404) 881-9552.

~ New Discoveries ~



discovered since January, 1999. They are: (1) FONTHILL ABBEY by Clews from the Bluebell Border series. This view is unlisted in Laidacker and is not the view illustrated in Coysh-Henrywood, part I. Form is unlisted in both Laidacker and C-H.



The cover of this tureen has the same EGGLESTON ABBEY YORKSHIRE view as the unusual 10 1/2" x 8 1/5" **large** Leaf Shaped dish (2). This form and this view in the Bluebell Border Series is unrecorded in any reference.



(3) WINDSOR CASTLE by Clews from the lovely Select Views Series. Unrecorded by Laidacker and unlisted in this form by C-H. Both this tureen and #1 are the same rectangular form used by Clews in the tureens found in the LANDING OF LAFAYETTE series.

(4) CASHIOBURY, HERTFORDSHIRE by Henshall from the Fruit



and Flowers Border series. Previously unrecorded in form or view for this series (except for that example in the exhibition catalog *True Blue* - which is a footed "sway-back" tureen), this has an underglaze title of BRITISH VIEWS.

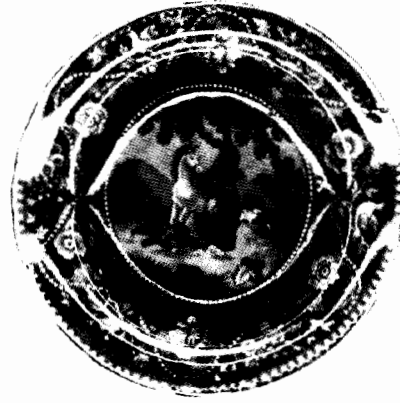
(CONT ON NEXT PAGE)



A 10" platter by Goodwin from the American Views series submitted by New Hampshire member Richard Marden is titled UTICA, however the actual scene is



ALBANY from the drawing by William H. Bartlett. This is an unlisted view and an unlisted size platter for this series.



Another discovery by Richard Marden is this 5 3/8" d plate from Davenport's Don Quixote Series. Untitled, but research in the original source volumes translated by Mary Smirke, reveal the scene to be THE

CURIOUS IMPERTINENT after a painting by Robert Smirke, R.A. Many years ago, Richard purchased six of these at a New York City auction.

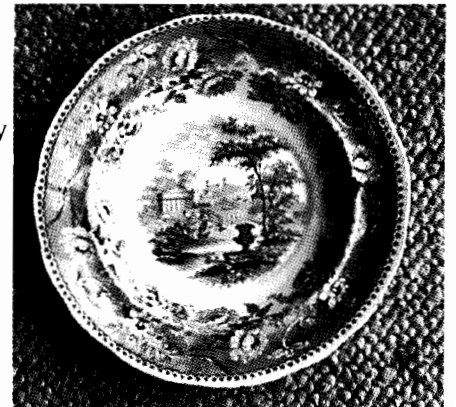
Italian Transferware from Lill Navarrette who says that this plate was given to her Grandfather by his mother in 1910's from a small town outside Lucca, Italy. The set was a wedding gift sometime in the 1860's to 1870's. The back is marked in two separate underglaze transfers "COLANDINE GP.C / MARCA DI FABRIQUE G. PALME & C".



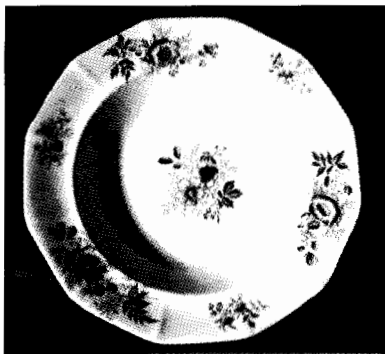
From James Elliott of Connecticut, comes what must be the finest and most interesting of all Importer's Marks. Discovered on the reverse of a light blue 10" d soup with a transfer of the FLORENTINE VILLAS, the transfer in question

reads, "PRESENTED TO J. D. GREENFIELD ESQ. AS A SMALL TESTIMONY OF ESTEEM. FROM HIS FRIENDS JOB & JOHN JACKSON". J. Greenfield operated a ceramic importing firm in New York in the first half of the Nineteenth century.

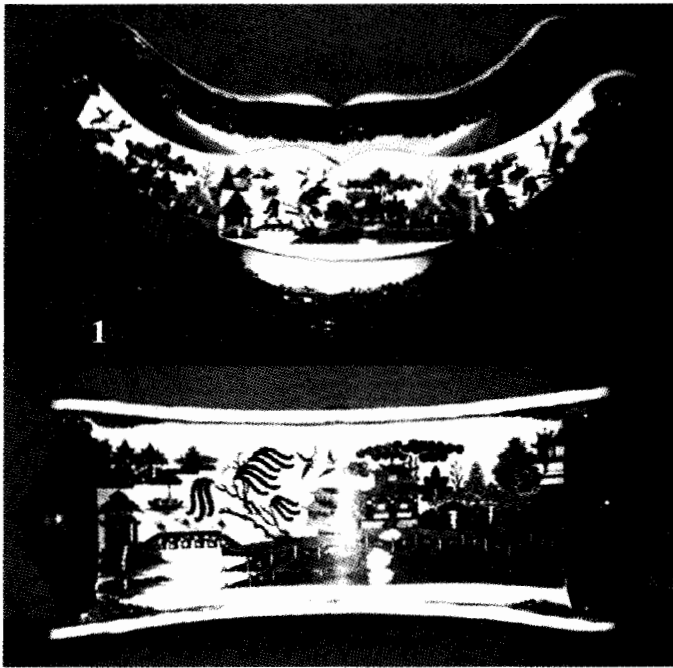
Several importer's marks are recorded linking him to the Clews firm. Obviously he became a valued client of the Jackson brothers, as is evidenced by this most unusual underglaze light blue transfer.



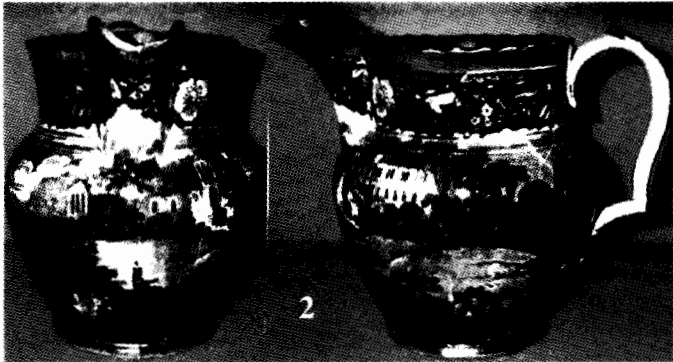
A new transfer pattern from Vivienne Manber who states that she checked Petra Williams (all 3 Romantic Staffordshire volumes) and found that the only transfer named "Floral" in Williams' volumes is a different pattern by Spode [Vol.1, p.31]. This newly discovered pattern is marked STONE CHINA / FLORAL / T.F. & Co. in a wreath-like cartouche. The transfer is sepia with added enamel overpainting. It is attributed to the Thomas Furnival Company in the 1844 - 1846 period.



Three items of interest from Norman Wolfe: (1) This cheese coaster or cradle is designed to hold an entire wheel of cheese. The shape has been recorded in the Doctor Syntax series but here we have it with the standard Willow pattern. It is 16 1/2" long and 8" high, impressed "CLEWS" on the base. Probably produced early in the Clews Brothers potting career, c1815-25. Norm says it works great for handing out Halloween candy!



(2) This pitcher is from the Select Scenery Series and shows Rivax Abbey as recorded by Sam Laidacker. To my knowledge this is the first time this view has been illustrated. The odd thing about this pitcher is that it has dark pink luster trim on the top rim, the base and the handle. It is 7 1/2" high and 9" spout to handle. Unmarked other than an "X" scratched into the base at the factory prior to firing. (3) This platter is from the "Asiatic



Plants" series which by all accounts is by an unknown maker. UNTIL NOW, that is. The platter has the standard underglaze mark plus the impressed mark of a Lion and a Unicorn with a shield between which reads "Opaque Granite China" and "W. R. & Co." This impressed mark can barely be made out in the second photo (3a). This mark was used by many of William Ridgway's partnerships which include: William



Ridgway & Co., William Ridgway, Son & Co. and Ridgway, Morley, Wear & Co.



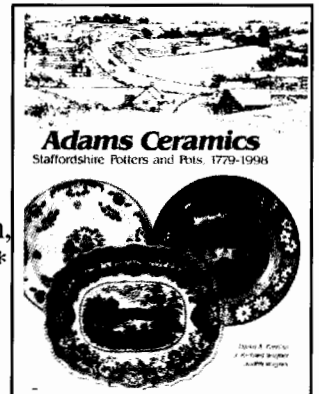
A final "discovery" from the editor. We had already completed the article concerning the Davenport Pottery on page 3 of this issue, when we purchased the 10" d plate illustrated on the left. Laidacker lists it as probably by the same maker as The Cities series, "for pieces are known that bear the same importers mark as that series." But he didn't say which importer. The plate we purchased had the same underglaze blue mark of Hill & Henderson as the Franklin Morals platter and the Louisville soup tureen, previously illustrated on page 4 of this Bulletin. The link between this Hunting series and the other Davenport products is quite strong.



A BOOK REVIEW BY ARNOLD KOWALSKY

Adams Ceramics, Staffordshire Potters and Pots 1779-1998

By: David A. Furniss, J. Richard Wagner & Judith Wagner.
Schiffer Publications, Ltd. Atglen, Pennsylvania 336 pages \$79.95*



This volume is a welcome and important work on the Adams family, one of the oldest firms of English potters in existence. There is not a major collection today that does not include the name of Adams, whether on transferware, historic blue, flow blue, mulberry, sponge ware, etc. The Adams Family is extremely well illustrated, and after nine hundred pictures one loses count.

The book is divided into six major chapters and five appendices, and includes a section on souvenir and commemorative ware. The section of dating marks and back stamps is of great significance, and is an important reference source for all collectors.

Each potter has his own history to tell, and this collaboration truly does justice to the name Adams.

* This book may be purchased for \$55.00 from: Arnold Kowalsky, 908 N. Broadway, Yonkers, NY 10701. 914-423-8899

DRAGON-ANTIQUES.COM



Beautiful and Extensive Miniature Dinner Service ~ Blue Botanical Transfer by COPELAND. Impressed mark to base of all major pieces circa 1850.

The set comprises a total of 52 pieces including Dinner Plates, Desert Plates, Soup Plates, Large Soup Tureen/Stand/Cover, 2 Vegetable Tureens/Stands/covers, 2 Entree Tureens/Covers, 2 Pie Dishes, 2 Pie Plates, 3 Graduated Meat Plates, Comport, Sauce Boat. All in exceptional condition with just 1 minor base chip to 1 piece! (very easily professionally restored if wished)

Price \$800.00 including Shipping and Insurance to most destinations Worldwide

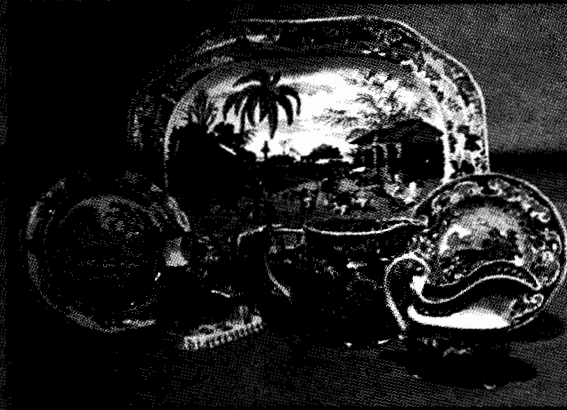
email: the.dragon@binternet.com or the.wyvern@binternet.com

MEMBER T.C.C.



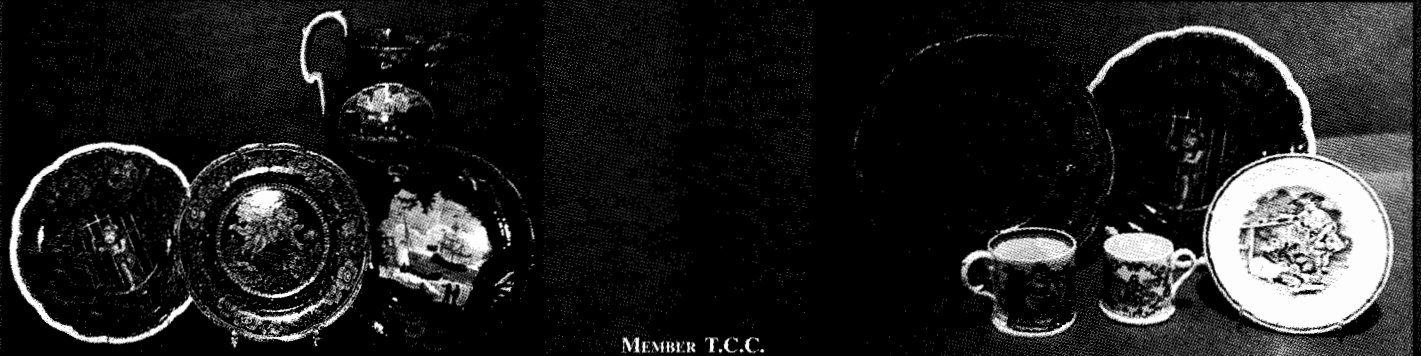
Merlin Antiques

Merlin Antiques was established in 1990. Our specialty is blue and white transferware and other British pottery from 1770 to 1850. We also carry red, green, black and brown transferware, as well as Staffordshire figures, Lustreware, Prattware, Gaudy Welsh, advertising pot lids, creamware, and miscellaneous. In addition, we offer miniature portraits on ivory, patriotic flag embroideries, prints, and other complimentary antiques.



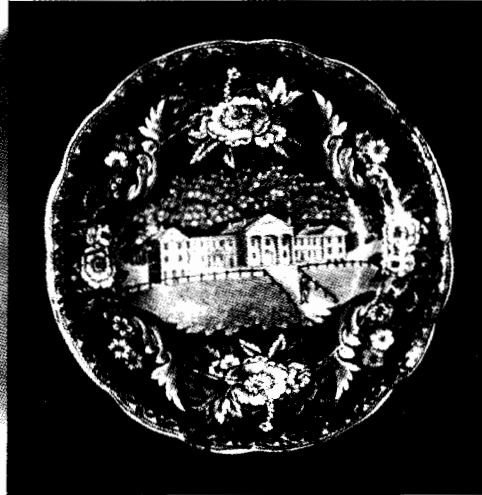
We are located in Palo Alto, California, 35 miles south of San Francisco. We are not a shop, but invite collectors to view our extensive stock, which is always on display, by appointment.

You can contact us at (650) 494-7920, or by e-mail at merlinbl@pacbell.net. Examples of our nearly 800 pieces of pottery can be found on our web site, www.merlinantiques.com.

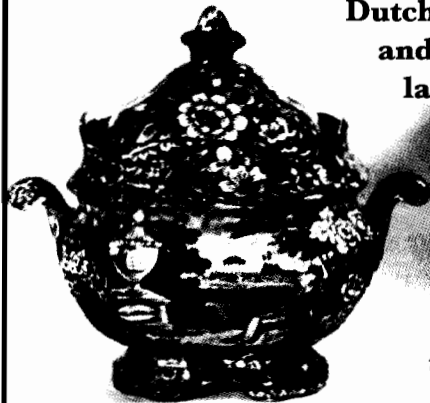


MEMBER T.C.C.

Historical Staffordshire & Rare Collectors Items



We specialize in Historical Staffordshire with American and English Views, Liverpool Pitchers of American Interest, Spatterware, Gaudy Dutch, Transferware, Anglo-American China and Currier & Ives Prints. We maintain a large inventory, so send us your want list. Check our website for show dates and locations, as well as locations of group shops where we maintain showcases filled with the above. We run weekly auctions on Ebay© under the seller name *vette64*. Check us out on the web.



William & Teresa Kurau
P. O. Box 457, Lampeter, Pa 17537
(717) 464 - 0731 Fax (717) 464 - 0590
email: lampeter@epix.net
website: www.historicalchina.com

MEMBER T.C.C.



Flo Boo Staffordshire Plus



WE COLLECT DR. SYNTAX BY CLEWS AND GRAPEVINE BORDER BY WOOD. ALWAYS INTERESTED IN HEARING ABOUT ITEMS IN THESE SERIES FOR SALE.

WE SELL STAFFORDSHIRE TRANSFERWARE, STAFFORDSHIRE FIGURINES PLUS ASSORTED ANTIQUES AND COLLECTIBLES. THE ONLY PLACE YOU CAN FIND *Flo Boo*, IS ON EBAY! TO TAKE A LOOK JUST GO TO WWW.EBAY.COM, CLICK ON SEARCH AT THE TOP OF THE PAGE, UNDER SELLERS JUST TYPE IN CLEWSMAN. NEW ITEMS LISTED ALMOST EVERY DAY OF THE WEEK!

Norman Wolfe
Flo Boo
PMB 541
1500A E College Way
Mount Vernon, WA 98273-5637
1-360-336-5835
Email: floboo@pacifcrim.net

MEMBER T.C.C.

~ Classified Ads ~

PERMANENT WANT: Giraffe (Ridgway); Africana (Phillips); Ostrich; Zebra (Stevenson); Albert Star (Ridgway, Morley & Wear); and Seasons. Beginning collection--all colors and forms considered. Send picture and price to Ed Turner, 417 A Street, SE, Washington, DC 20003-3806 or fax to 202.479.3388.

WANTED: "Doctor Syntax Entertained at College" or "The Garden Trio" by Clews. Please contact: Norman Wolfe, PMB 541, 1500A E College Way, Mount Vernon, WA 98273-5637 or call: 360-336-5835.

WANTED TO BUY: One piece or a collection. All types, all colors of **Staffordshire, Liverpool, War of 1812** and other transferware circa 1780 - 1860. Also early Staffordshire animal figures. David Arman, PO Box 39, Portsmouth, RI 02871 or call 401-841-8403



Needed for Anglo-American Ceramics, Part II

Photos of the Following Twelve Ceramic Views

Wood French Vws - ENVIRONS DE CHAMBERY
 Wood Floral Border - DEPT OF STATE, WASHINGTON
 Ridgway American Scenery -DELAWARE WATER GAP
 Ridgway Catskill Moss - ANTHONY'S NOSE
 A Stevenson Scroll Border - CITY HALL, NY
 Mellor Venerables Arms of States-VW FM GOWANUS HGTS
 Mellor Venerables Arms of States- CAPITOL AT WASHINGTON
 Mellor Venerables Arms of States - VILLAGE OF LITTLE FALLS
 Goodwin American Vws - CALDWELL, LAKE GEORGE
 Goodwin American Vws - COLUMBIA BRIDGE
 Goodwin American Vws - EAST PORT AND PASSAMAQUODDY
 Meigh American Cities & Scenery- WASHINGTON (fm the President's House)

Please Contact

David or Linda Arman
 P O Box 39
 Portsmouth, RI 02871
 401-841-8403 Phone/Fax

MEMBER T.C.C.

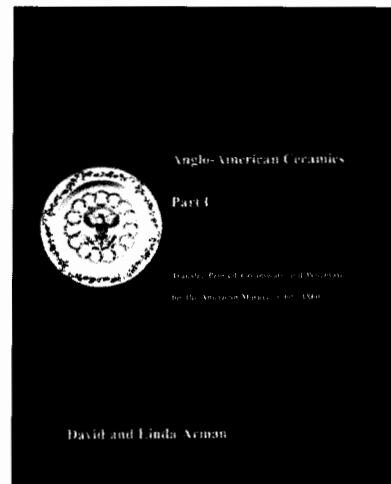
Anglo-American Ceramics, Part I Transfer Printed Creamware and Pearlware for the American Market 1760 - 1860

L
i
v
e
r
p
o
o
l

W
a
r

o
f

1
8
1
2



Special Price for T.C.C. Members


\$85.00ppd
Send Orders to:

The Oakland Press
P. O. Box 39
Portsmouth, RI, 02871

FIRST CLASS

FIRST CLASS MAIL
 U.S. POSTAGE
 & FEES PAID
 PORTSMOUTH RI
 02871
 PERMIT #40

THE TRANSFERWARE COLLECTORS CLUB BULLETIN
 POST OFFICE BOX 39
 PORTSMOUTH, RI 02871




Member T.C.C.

Silver Birch Enterprises
The Ironstone Collector's Resource
Staffordshire Transferware
 Flow Blue
 Mulberry
 Tea Leaf
 White Ironstone
www.SilverBirch.com
 Stanley Moreo
 Email: Stan@SilverBirch.com
 1310 Maple Ave., Evanston, IL 60201
 (847) 864-4494
 Fax: (847) 866-8884

Member T.C.C.

NEW LIST
Staffordshire China
 Please send a large SASE for our new list. We welcome opportunities to buy single items or collections.



*10" diameter
 plate by Wood
 from the
 Irregular Shell
 Border series*

Richard G. Marden
 P O Box 524
 Wolfeboro, NH 03894
 (603) 569-3209